

Supplementary material

Table S1. Estimated egg production by different females size class (<80, 80–90, >90 cm).

Year							Contribution					
	<80		80–89		>90		<80		80–89		>90	
	# eggs	# females	# eggs	# females	# eggs	# females	% eggs	% females	% eggs	% females	% eggs	% females
2013	43,982	109	273,910	637	38,649	78	12.34	13.23	76.82	77.31	10.84	9.47
2014	64,382	171	207,080	496	23,165	41	21.85	24.15	70.29	70.06	7.86	5.79
2015	91,643	226	236,578	547	41,080	79	24.82	26.53	64.06	64.20	11.12	9.27
2016	185,513	485	368,491	889	18,685	37	32.39	34.37	64.34	63.00	3.26	2.62
2017	311,038	835	380,484	936	36,565	71	42.72	45.33	52.26	50.81	5.02	3.85
2018	522,767	1337	843,467	1957	34,967	73	37.31	39.71	60.20	58.12	2.50	2.17

SUPPLEMENTARY FIGURES

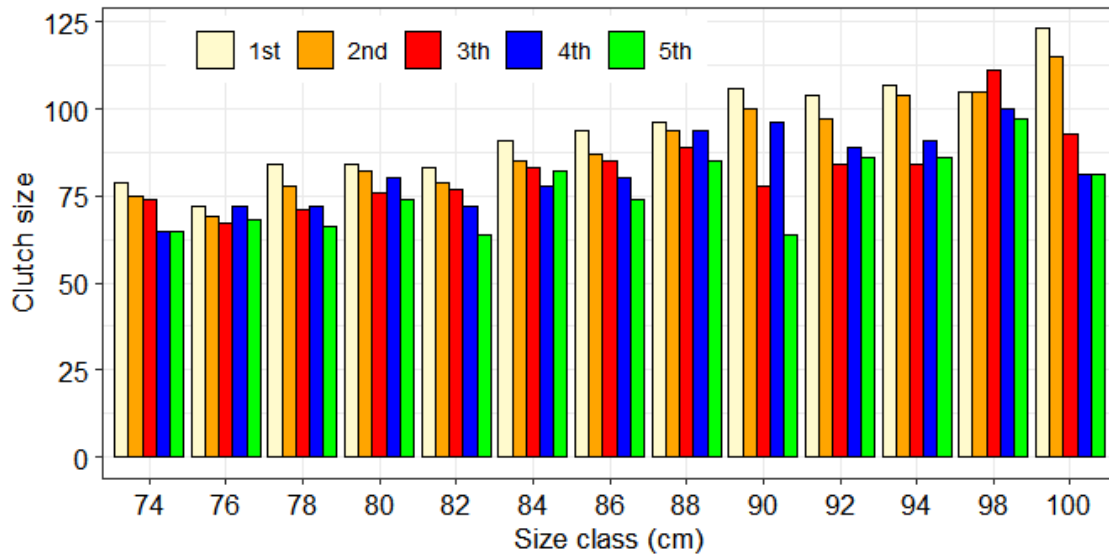


Fig. S1. Number of nests with respective clutch size detected for the same female (loggerhead sea turtle *Caretta caretta*) in João Barrosa beach. Size class = the size of female curved carapace length and the ordinal number are the clutch size.

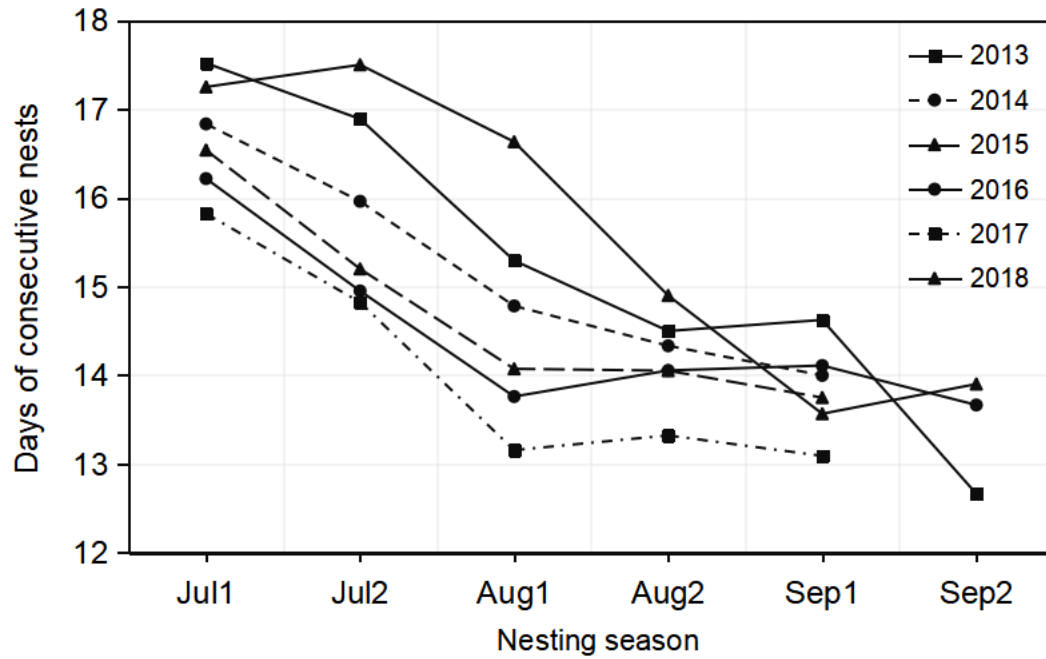


Fig. S2. Mean internesting intervals recorded for female loggerhead turtle at the Sea Turtle Natural Reserve (STNR) in João Barrosa Beach (Boa Vista Island, Cabo Verde Archipelago). jul1 = first half of July, jul2 = second half of July, aug1 = first half of August, aug2 = second half of August, sep1 = first half of September, sep2 = second half of September.