

Figure S1. Semi-log histogram of the number of individuals caught and the percentage of fishing records with positive catches.

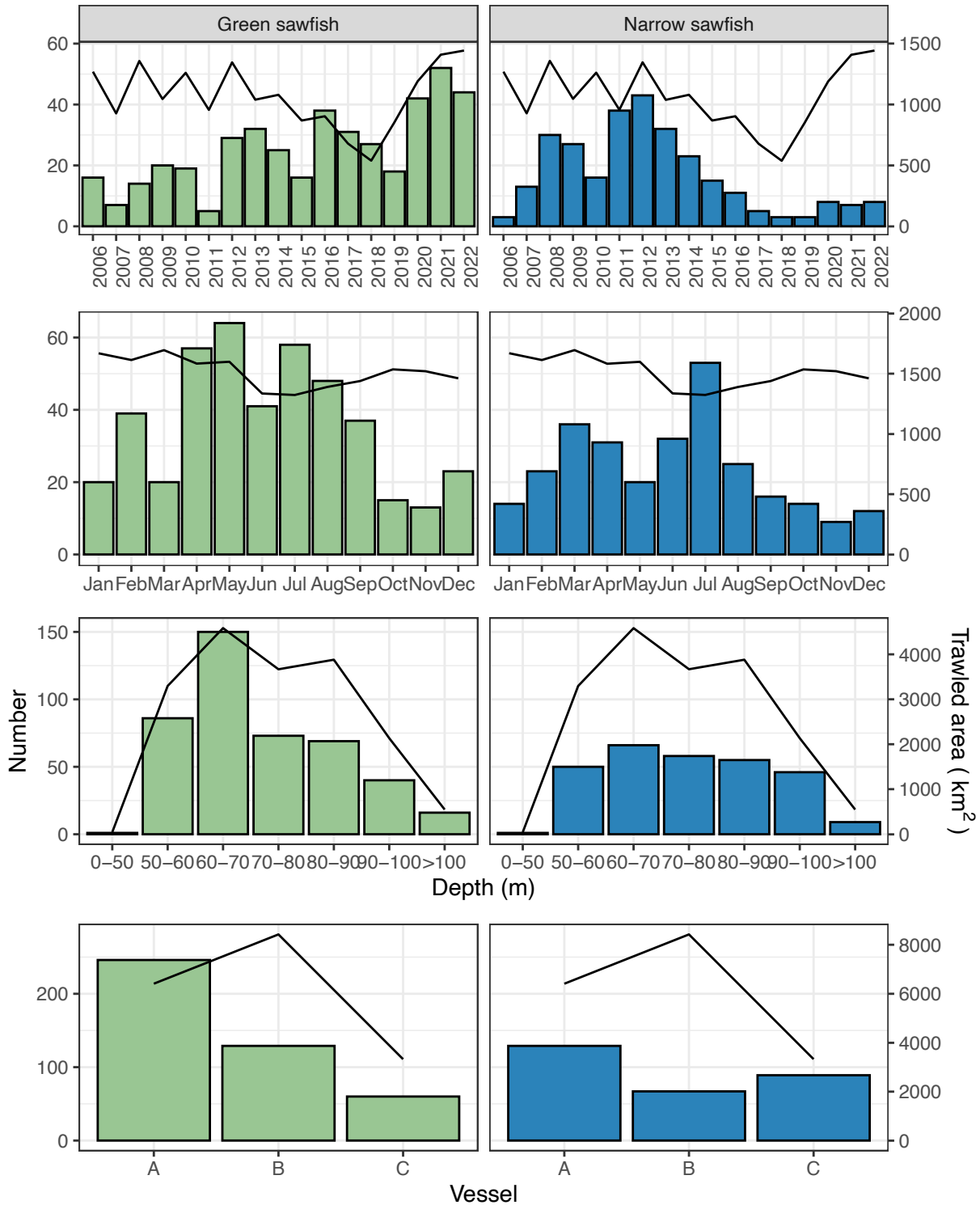


Figure S2. Number of reported sawfish captures in fishery logbooks by species for year, month, depth, and vessel. Displayed data are the subset used in the GAMLSS regression model to estimate standardised catch rates. The solid line is the corresponding fishing effort with units displayed on the secondary y axis