

Supplementary Figures

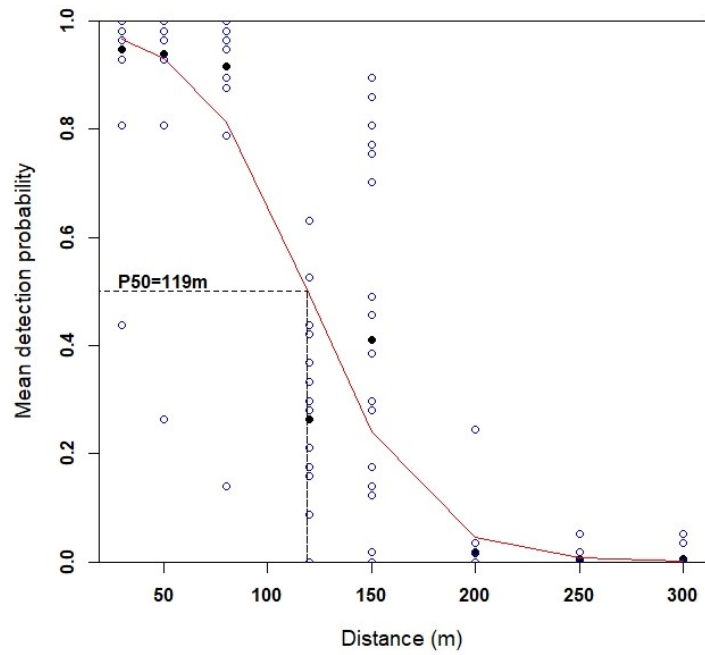


Fig. S1. Results of range tests conducted in the shellfish farm. Hollow blue circles denote mean hourly detection probabilities and filled black circles denote means for each distance interval. The red line denotes a fitted binomial model.

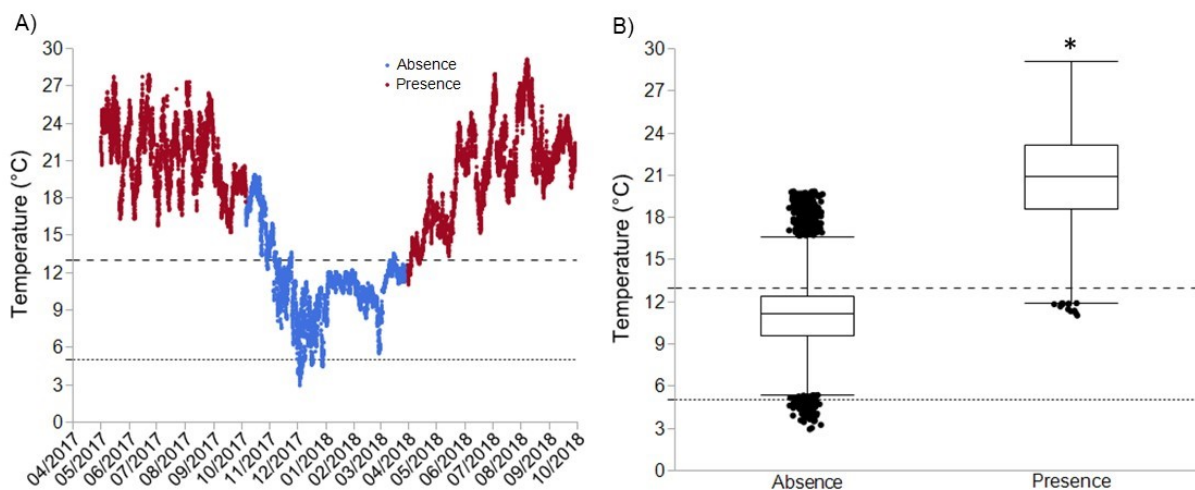


Fig. S2. A) Water temperature (°C), B) box plot of temperature (°C), recorded hourly by a NKE probe located on the same table as the acoustic receiver in the farm from 2 May 2017 to 30 September 2018. The horizontal dashed and dotted lines correspond to the lower limit (13°C) for seabream feeding (Ibarz et al. 2003) and to the lethal temperature (5°C) (Barnabé 1990), respectively. The asterisk indicates a significant difference between means (Wilcoxon test, $p < 0.05$).

LITERATURE CITED

- Barnabé G (1990) Rearing bass and gilthead sea bream. In: *Aquaculture*. Barnabé G (ed) Horwood, London, p 647–686
- Ibarz A, Blasco J, Gallardo MA, Sánchez J (2003) Oxygen consumption and feeding rates of gilthead sea bream (*Sparus aurata*) reveal lack of acclimation to cold. *Fish Physiol Biochem* 29:313–321