

Fig. S1. Sediment silt content across the Wadden Sea. In white the sampling locations included in our study. Black polygons present the borders of commercial mussel plots. Data source: <https://www.rforscience.com/oceanview-items/articles/wadden-sea-rws-sediment-atlas.html>

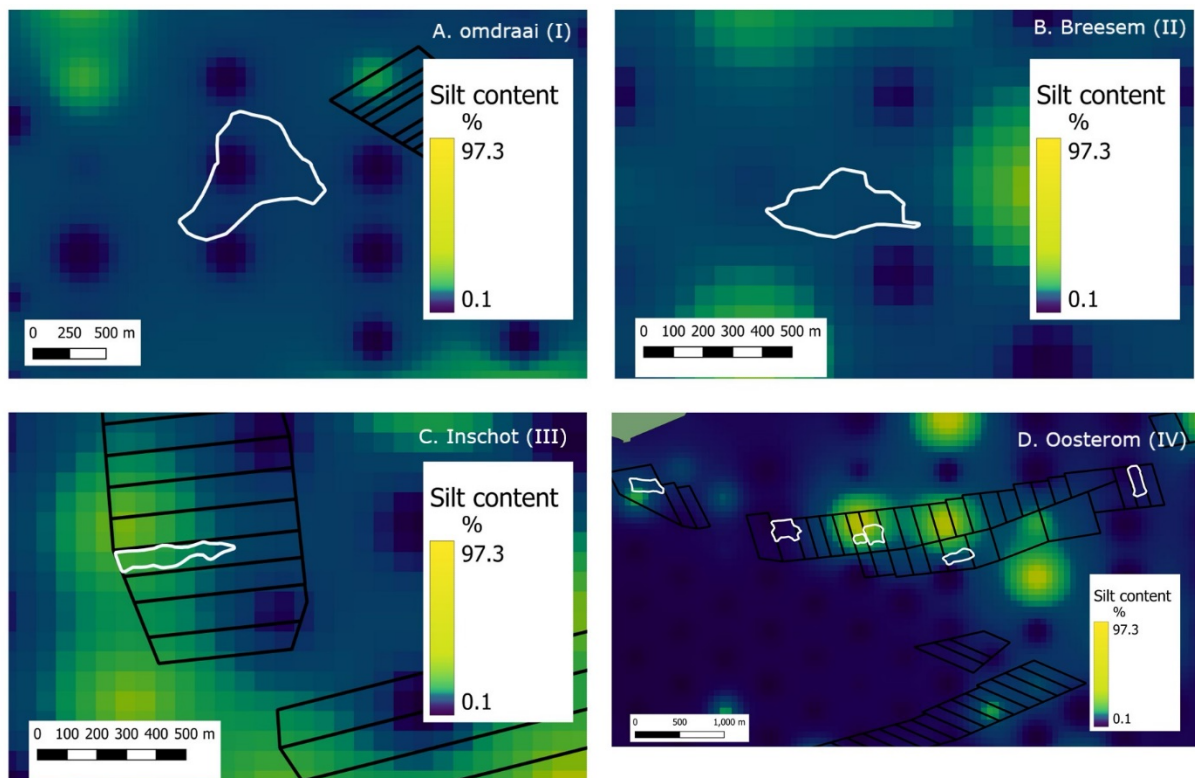


Fig. S2. Sediment silt content at the four case study locations. White contours represent fisheries/aquaculture activity during the sampling campaigns. Black polygons present the borders of commercial mussel plots. Data source: <https://www.rforscience.com/oceanview-items/articles/wadden-sea-rws-sediment-atlas.html>. Note: Given the dynamic nature of mussel beds (Troost et al. 2022) it is likely that during the sediment monitoring program no mussel beds were present at location I and II. Sediment properties, including silt content, therefore likely differed from our field sampling at these locations.