

Supplement 1

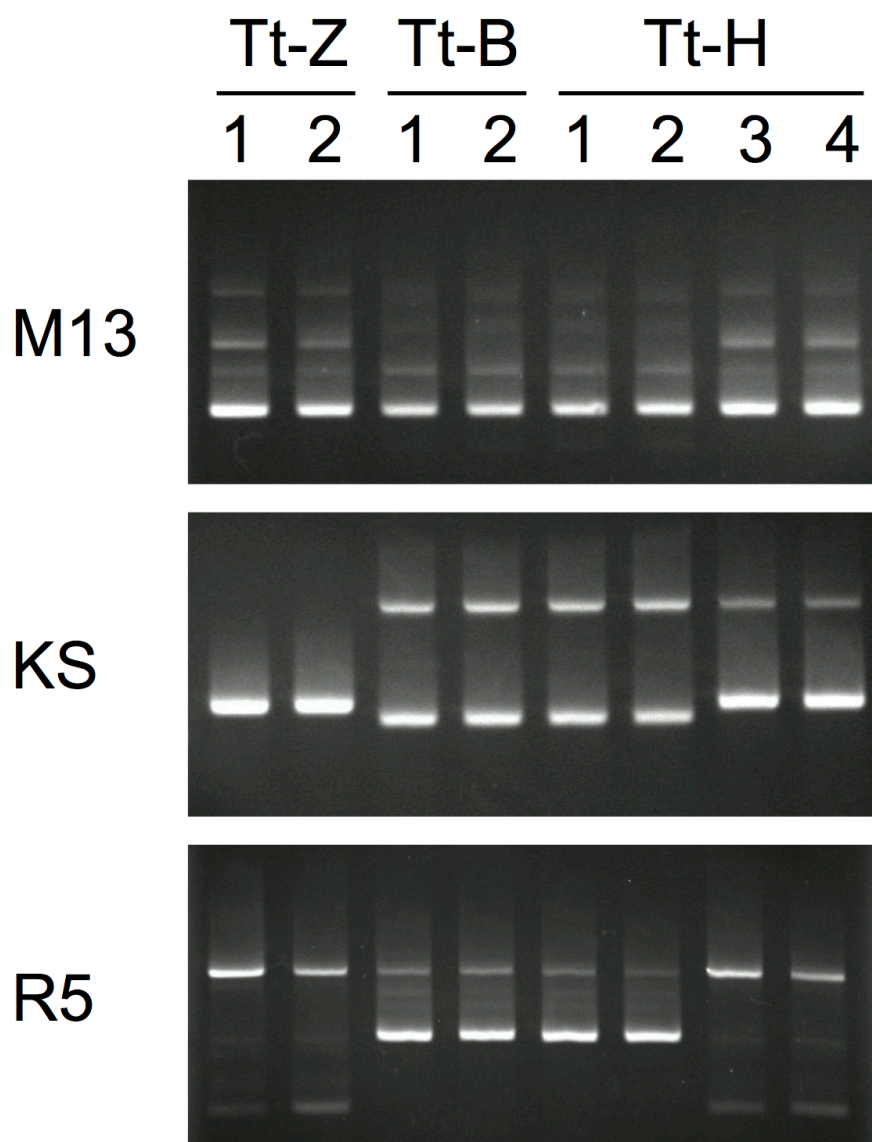


Fig. S1. RAPD PCR profiles of isolates of Tt-Z, Tt-B, and Tt-H with M13, KS, and R5 primers. Isolates of Tt-Z and Tt-B showed one profile each, and isolates from Tt-H were separated into two different profiles.

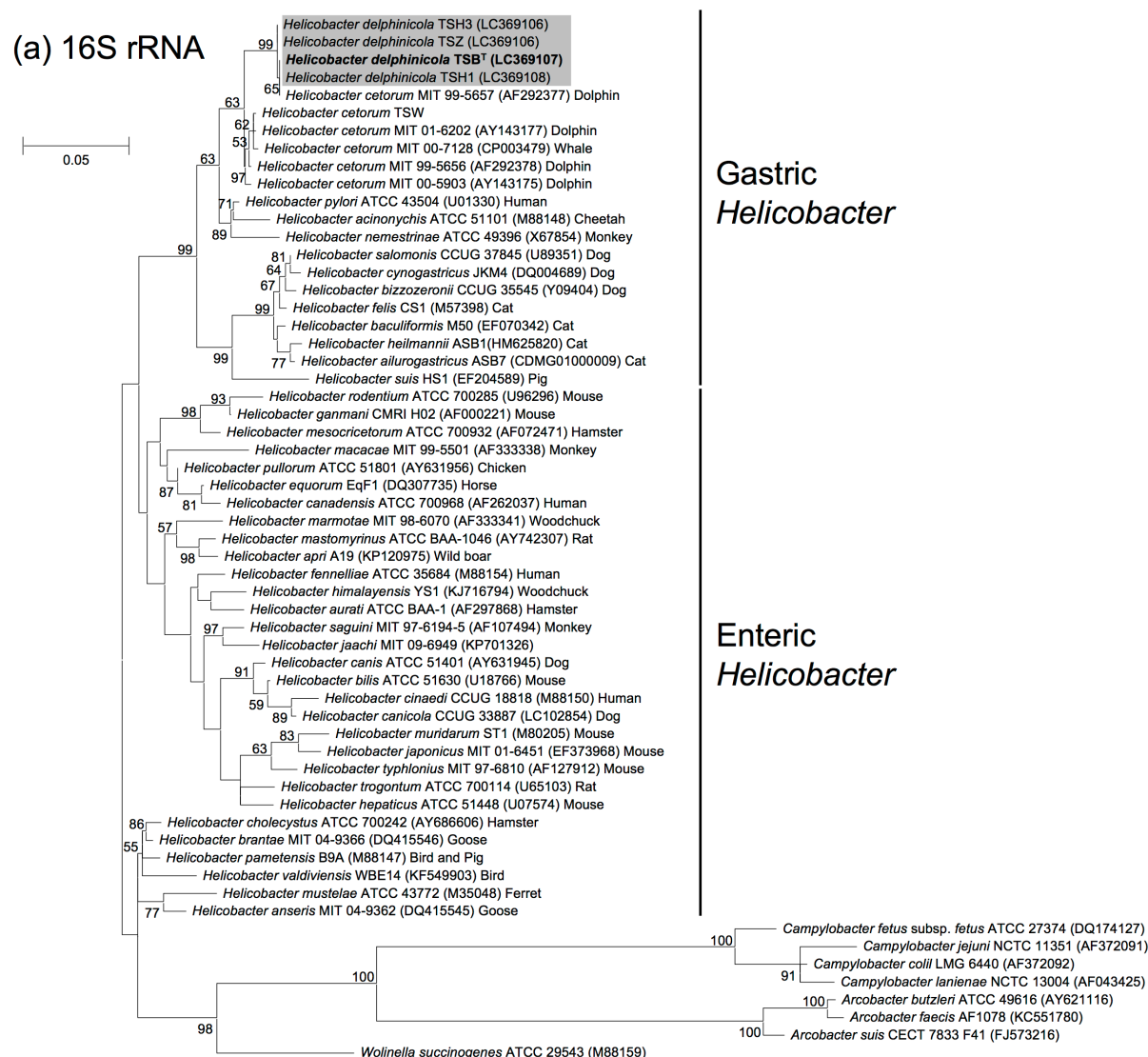
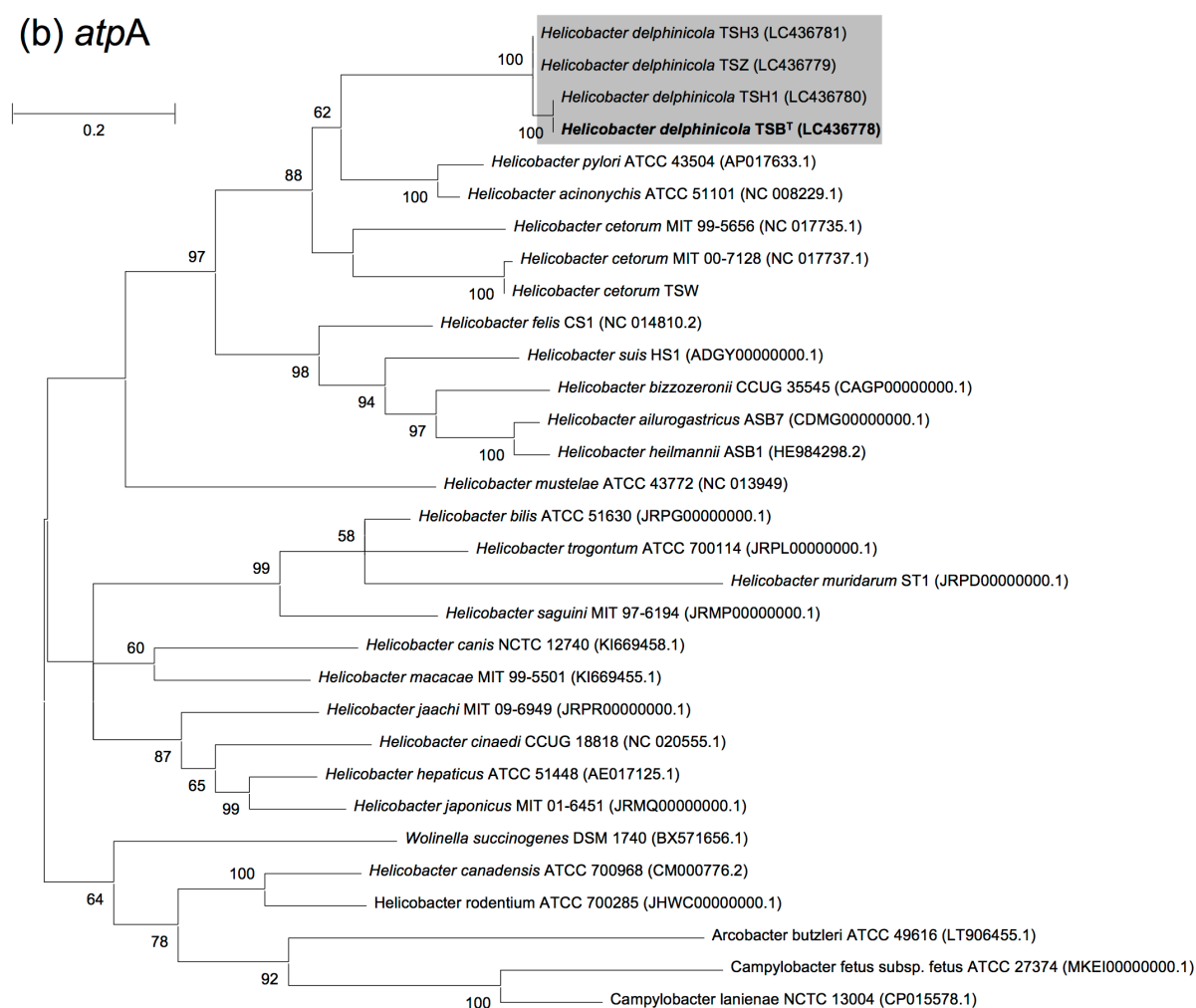


Fig. S2. Phylogenetic trees based on 16S rRNA, *atpA*, and *hsp60* sequences. Numbers at nodes represent bootstrap support $\geq 50\%$ based on 1000 replications. (a) ML tree based on 16S rRNA sequences showing the phylogenetic position of *H. delphinicola* sp. Bars, 0.05 changes per nucleotide position. (b) ML tree based on *atpA* sequences showing the phylogenetic position of *H. delphinicola* sp. Bars, 0.2 changes per nucleotide position. (c) ML tree based on *hsp60* sequences showing the phylogenetic position of *H. delphinicola* sp. Bars, 0.2 changes per nucleotide position.

(b) *atpA*



(c) *hsp60*

